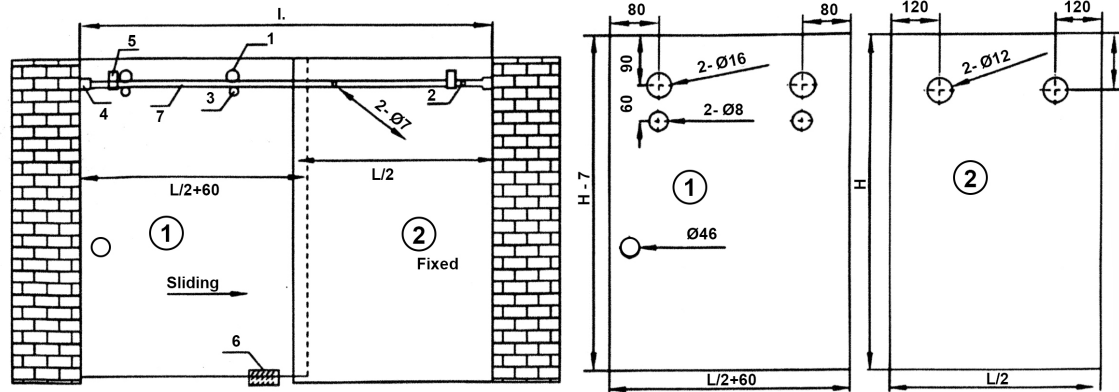


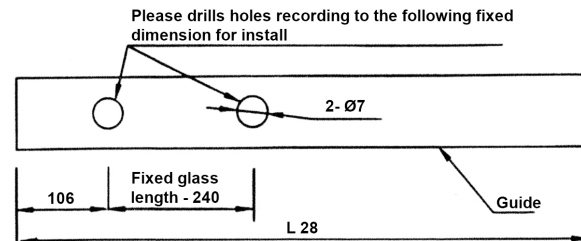
Instruction for installation

- 1 - The maximum door weight is 70Kg, and glass should be tempered / toughened.
 - 2 - The guide track without any holes. For installation, please drills it accordingly.
 - 3 - This type is applied to 180° single door, the maximum length of door is 1.8 meter, and suitable for 8-10 mm thickness glass.
 - 4 - This drawing is only for reference.
- Installation drawing of square tube 30*10

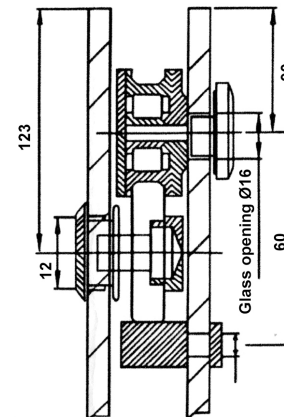


Opção de vidro fixo a 90°

- | | |
|-------------------------|----------------------------|
| 1 - Sliding door roller | 2 - Glass fixing connector |
| 3 - Safety pin | 4 - Wall mount bracket |
| 5 - Door stopper | 6 - Floor guide |
| 7 - Sliding tube | |



Units of length: mm



Screenshot installation diagram